



# VALUING NATURE

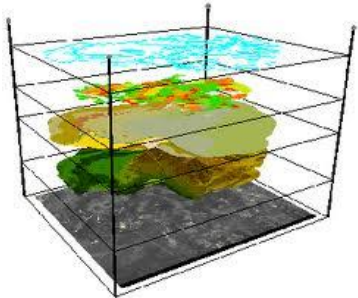
Luis Carrasco Tornero

Remote Sensing and Spatial Ecologist  
NERC Centre for Ecology and Hydrology



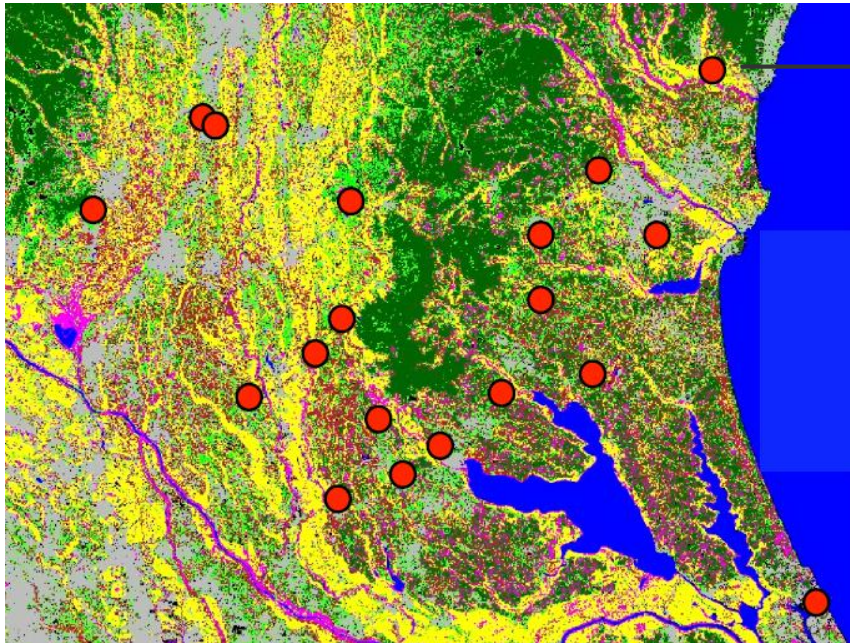
PhD (University of Tsukuba, Japan) in Avian Ecology

Distribution of Herons and Egrets Colonies in  
agricultural landscapes of central Japan

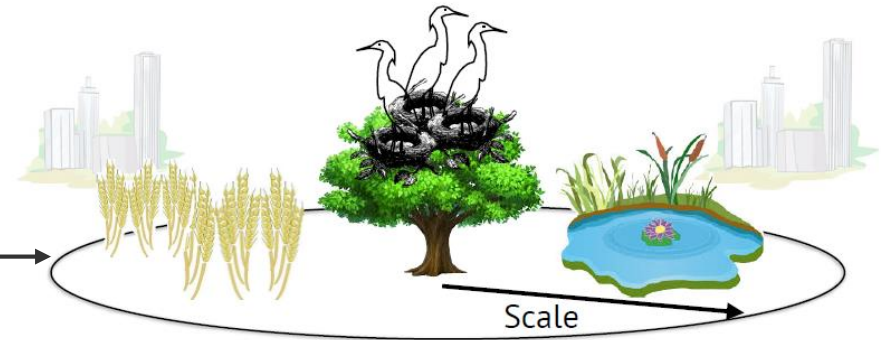


# Predictive models of species distribution

Land cover maps  
+ Animal distribution data



Japan JAXA Land Cover Map 2011  
● Colonies



Machine learning algorithms  
(Random Forests / Neural Networks)

**Predictions of future  
distribution under changes**

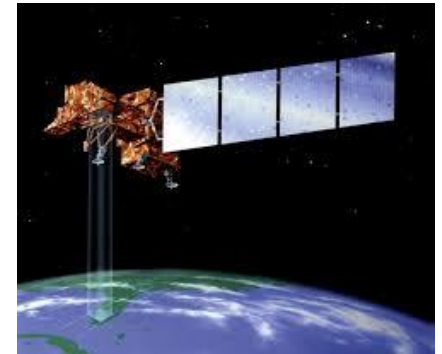
PhD Results: Scale of selection was a key feature; Fragmentation affected selection

# Businesses will need accurate ecosystem services and biodiversity loss predictions

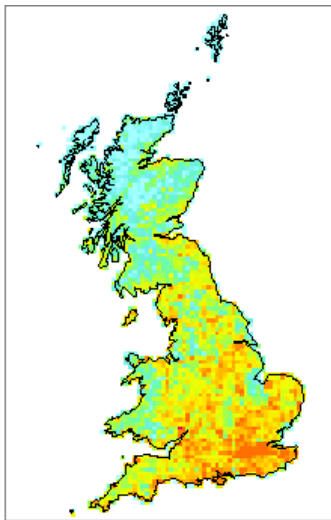
## 1) Remote sensing expertise:

Businesses need to know **what can be obtained** from satellite data

**Accurate mapping adapted** to necessities



[landsat.gsfc.nasa.gov](http://landsat.gsfc.nasa.gov)



UK Biodiversity richness score prediction ([nhm.ac.uk](http://nhm.ac.uk))

## 2) Ecological prediction:

Predicting of **ecosystem services** under climate **change**, landscape changes

Business affecting landscapes? Fragmentation?  
How will this **affect biodiversity?**

# Attending BIS: how to include business scenario into predictive ecosystem models

**How nature affects business decisions?**  
(economic importance of nature!)



Including ecosystems services (as a way to value nature) into my models (inputs/outputs)

Also... What are business interests on satellite data? (specialization?)

